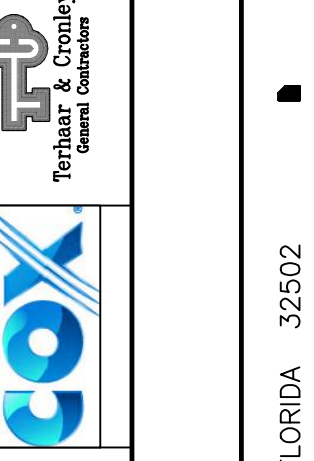


BAY DESIGN ASSOCIATES ARCHITECTS, P.L.

DESIGN : GSJ
DRAWN : SCC
CHECKED : GSJ
REVISION : 02.15.08
02.22.08 02.26.08 03.19.08
03.31.08 04.03.08

PROJECT NO : 2247
FILE NO : 2247-A1.1
DATE : 02.11.08



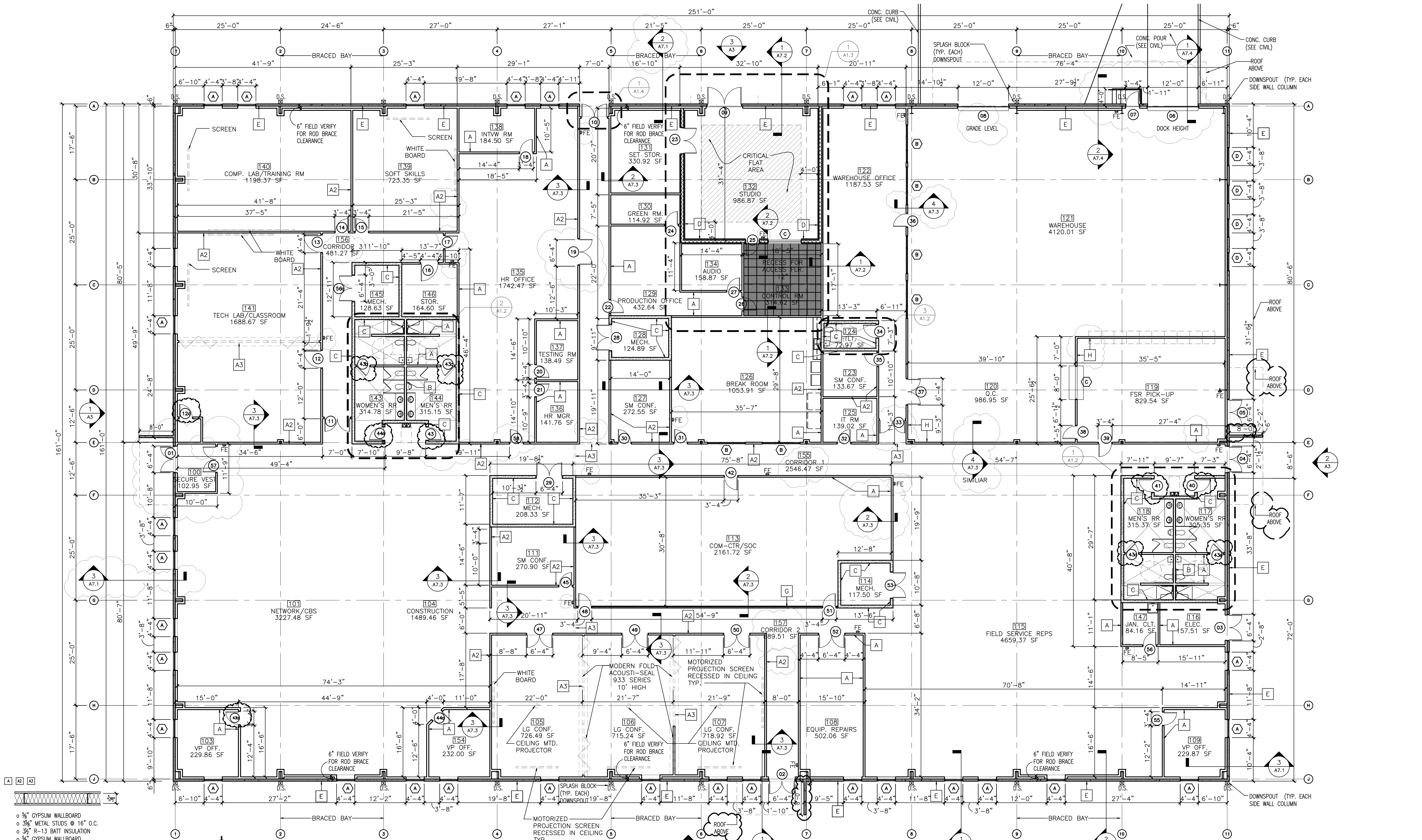
PROJECT: COX COMMUNICATIONS - ELLYSON
3406 MCLEMORE DRIVE PENSACOLA, FL

SHEET TITLE: FLOOR PLAN

PLANNERS: 720 BAYFRONT PKWY, SUITE 200
PENSACOLA, FLORIDA 32502
ARCHITECTS: AA 0003997

G. STEVEN JERNIGAN
SHEET NO :

A1.1



1 FLOOR PLAN
A1.1 SCALE: 3/32" = 1'-0"

- 5/8" GYPSUM WALLBOARD
- 3/8" METAL STUDS @ 16" O.C.
- 3/2" R-13 BATT INSULATION
- 5/8" GYPSUM WALLBOARD
- HEIGHT A = 11'-0"
- A2 - 14'-0"
- A3 - 10' - 14' (ABOVE CEILING)

- TYP. INTERIOR WALL
-
- TYP. PLUMBING WALL
-
- 5/8" GYPSUM WALLBOARD
 - 6" METAL STUDS @ 16" O.C.
 - 3/2" R-13 BATT INSULATION
 - 5/8" GYPSUM WALLBOARD
 - HEIGHT TO 11'

- TYP. SOUND WALL
-
- 5/8" GYPSUM WALLBOARD
 - 3/8" METAL STUDS @ 16" O.C.
 - 3/2" R-13 BATT INSULATION
 - HEIGHT TO 14'-0"
 - EA. TRACK SET IN ACOUSTICAL SEALANT

- TYP. STUDIO WALL
-
- 5/8" GYPSUM WALLBOARD
 - 2 1/2" METAL STUDS @ 16" O.C.
 - 8" CMU BLOCK - SAND FILLED
 - 3/2" R-13 BATT INSULATION
 - 2 1/2" METAL STUDS @ 16" O.C.
 - 5/8" GYPSUM WALLBOARD
 - 3/2" R-13 INSULATION

- TYP. EXTERIOR WALL
-
- 5/8" GYPSUM WALLBOARD
 - 2 1/2" METAL STUDS @ 16" O.C.
 - 3/2" R-13 BATT INSULATION
 - 6" ROD BRACE CLEARANCE
 - 6" CONC. WALL PANEL

- TYP. EXTERIOR WALL
-
- 5/8" GYPSUM WALLBOARD
 - 2 1/2" METAL STUDS @ 16" O.C.
 - 3/2" R-13 BATT INSULATION
 - 6" ROD BRACE CLEARANCE
 - 6" CONC. WALL PANEL

- TYP. TV MOUNT WALL
-
- 5/8" GYPSUM WALLBOARD
 - 6" PLYWOOD
 - 6" METAL STUDS @ 16" O.C.
 - 3/2" R-13 BATT INSULATION
 - 5/8" GYPSUM WALLBOARD
 - HEIGHT TO 11'

- TYP. INTERIOR WALL @ WAREHOUSE
-
- 5/8" GYPSUM WALLBOARD
 - 6" 18 GA. METAL STUDS @ 16" O.C.
 - 3/2" R-13 BATT INSULATION
 - 5/8" GYPSUM WALLBOARD
 - HEIGHT TO ROOF DECK
 - CROSS BRACING @ 8" O.C. MAX

